

# REFLECTIONS

PVC WINDOW SURROUNDS



*distributors of*  
QUALITY MOULDINGS  
& ACCESSORIES

WWW.GARDENSTATELUMBER.COM





Garden State Lumber Introduces...

# REFLECTIONS

PVC WINDOW SURROUNDS

The reflections line is a series of prefabricated custom pvc window surrounds that are sure to enhance the architecture of any home. Constructed using our Palladium PVC Line of durable, rot resistant cellular pvc s4s and mouldings, our surrounds are assembled with the highest level of craftsmanship and quality.

Featuring 8 distinct styles and offering any custom style or design, our reflections line is sure to meet the needs of builders, contractors, designers and homeowners alike.

Whether new construction or remodel, our easy to order surrounds come fully assembled with

all included hardware as well as our custom aluminum drip cap\* with siding channel. Installation is simple and clean using the cortex fastening system with included drill bit. The cortex fastening system offers a secure face mounting application with concealed fastener heads without caulking, sanding or painting.

Our standard surrounds come square edged with 3-1/2" frame size (casing width) but can be modified using our optional upgrades. These include an applied apron below the historic sill, 3/4" x 3/4" siding channel as well as a 5-1/2" wide frame size. All of our units can also be modified to fit circle and arch top applications.

*From quoting to job completion, the reflections line has been designed with simplicity in mind. You provide us with the surround # and the unit dimensions\*\* of your windows and we take care of the rest...*

\* ALUMINUM DRIP CAP COMES LOOSE AND CAN BE DISCARDED IF IT DOES NOT FIT YOUR APPLICATION

\*\* WE ACCEPT BOTH THE UNIT DIMENSIONS PROVIDED BY THE MANUFACTURER AS WELL AS THE UNIT NUMBERS OF THE MOST COMMONLY USED WINDOW LINES

(ALL REFLECTIONS SURROUNDS ARE MADE WITH A 3/16" TOLERANCE TO THE DIMENSIONS PROVIDED )

— Manufactured by Slatcon Inc. —



## GSWS1

Top: 1" x 5-1/2" S4S with WM164 Base Cap, SC234 Solid Crown, Custom Drip Cap

Sides: 1" x 3-1/2" S4S

Bottom: Historic Sill



## GSWS2

Top: 1" x 5-1/2" S4S with WM164 Base Cap, Rams Crown, Custom Drip Cap

Sides: 1" x 3-1/2" S4S

Bottom: Historic Sill



[www.gardenstatelumber.com](http://www.gardenstatelumber.com)

Call 800.526.4708





## GSWS3

- Top: 3/4" x 3-1/2" S4S with Backband, Rams Crown, Custom Drip Cap
- Sides: 3/4" x 3-1/2" S4S with Backband
- Bottom: Historic Sill



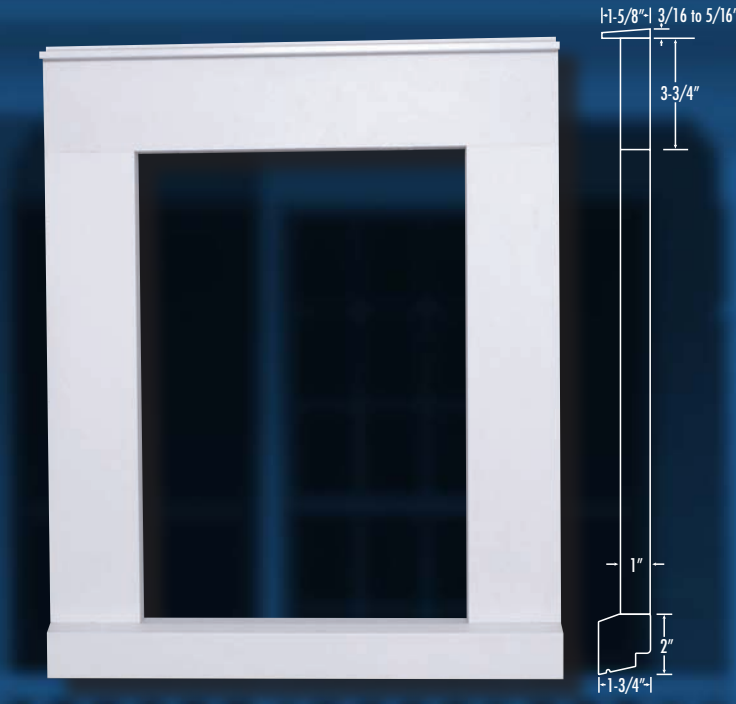
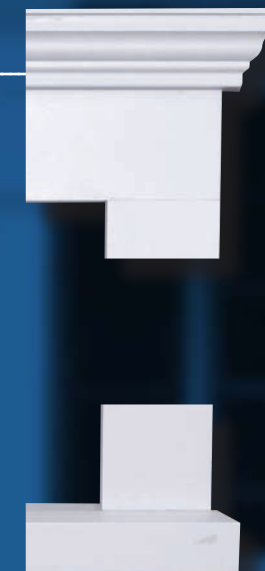
## GSWS4B

- Top: 1" x 5-1/2" S4S with SC234 Solid Crown, Custom Drip Cap
- Sides: 1" x 3-1/2" S4S
- Bottom: Historic Sill



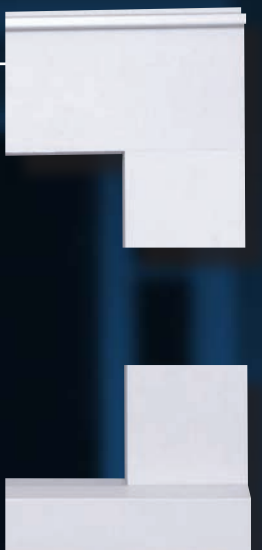
## GSWS4

- Top: 1" x 5-1/2" S4S with Rams Crown, Custom Drip Cap
- Sides: 1" x 3-1/2" S4S
- Bottom: Historic Sill



## GSWS5

- Top: 1" x 3-1/2" S4S with Custom Drip Cap
- Sides: 1" x 3-1/2" S4S
- Bottom: Historic Sill

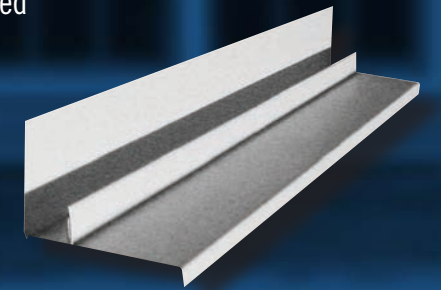






## STANDARD FEATURES:

- ◆ All reflections pvc window surrounds come fully assembled with protective cardboard corners and plastic wrapping
- ◆ Installation hardware and instructions for quick and easy job site application
  - Our cortex fastening system offers a secure face mounting application with concealed fastener heads without caulking, sanding or painting
  - Screws, PVC screw plugs, and cortex impact driver drill bit are included
- ◆ Custom aluminum drip cap with 3/4" siding channel
- ◆ Standard surrounds come square edged with a 3-1/2" frame size

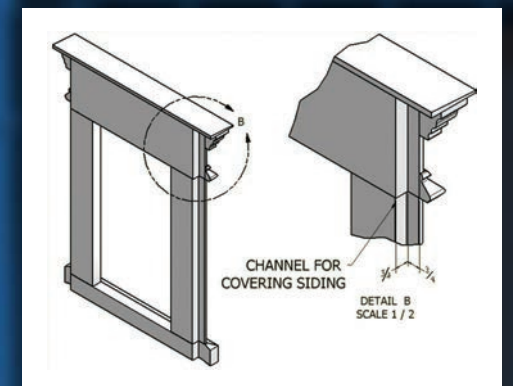


## OPTIONS:

- ◆ Applied apron below historic sill (A)
- ◆ 3/4" X 3/4" siding channel on sides and bottom (S)
- ◆ 5-1/2" (Casing Width) Wide frame size (W)

We can make custom surrounds to any style or specification using any of Garden State Lumber's stock PVC profiles. Please call for custom pricing.

*\*Circle and arch tops also available*





# REFLECTIONS

PVC WINDOW SURROUNDS



ASK ABOUT OUR OTHER PRODUCTS:



22 MULLER ROAD, OAKLAND, NEW JERSEY 07436

PHONE: 800.526.4708 FAX: 201.651.1666 WWW.GARDENSTATELUMBER.COM